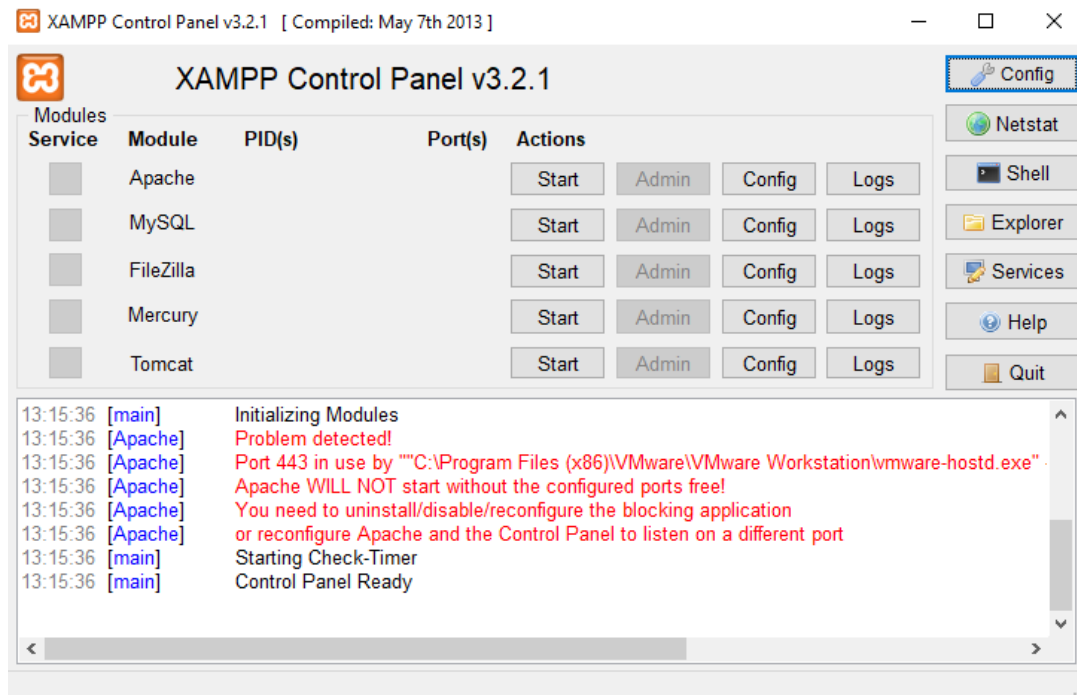


Go through the information given below if you get an error as shown below:

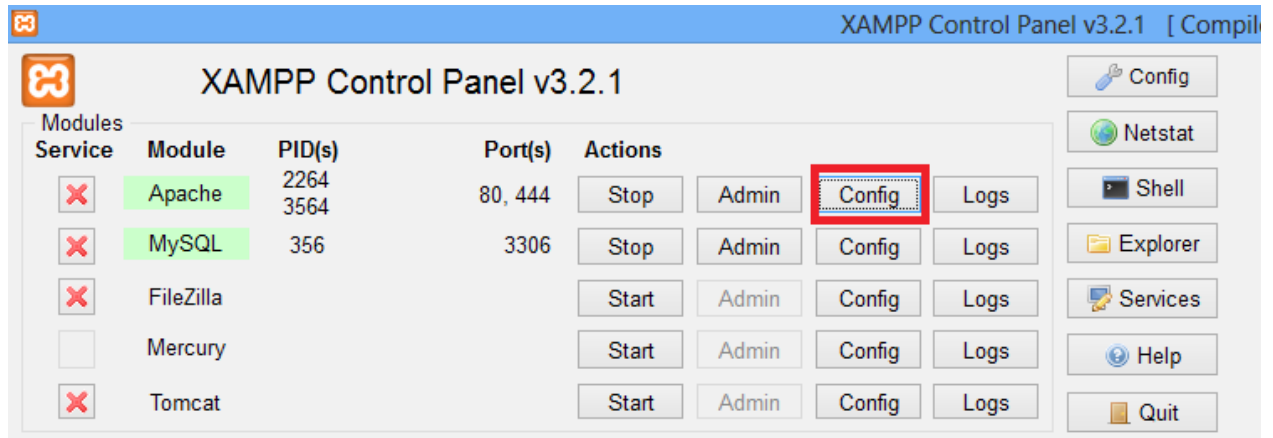
1. Apache port error

Here, the message says that **Port 443 in use** by some other program. We need to assign a different port number.

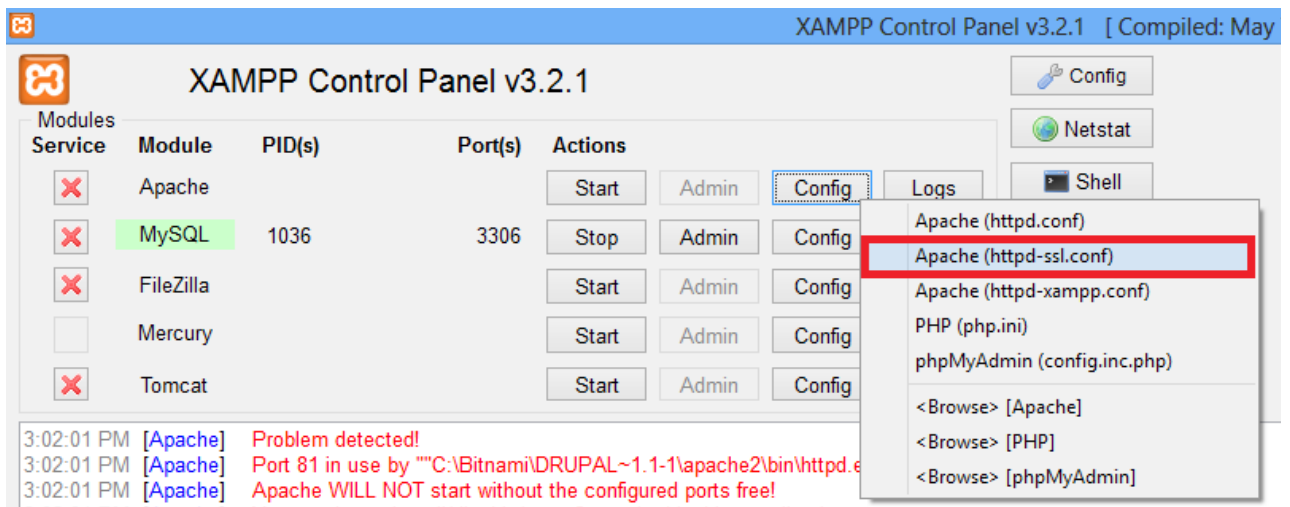


Solution:

1. Click on **Apache Config**

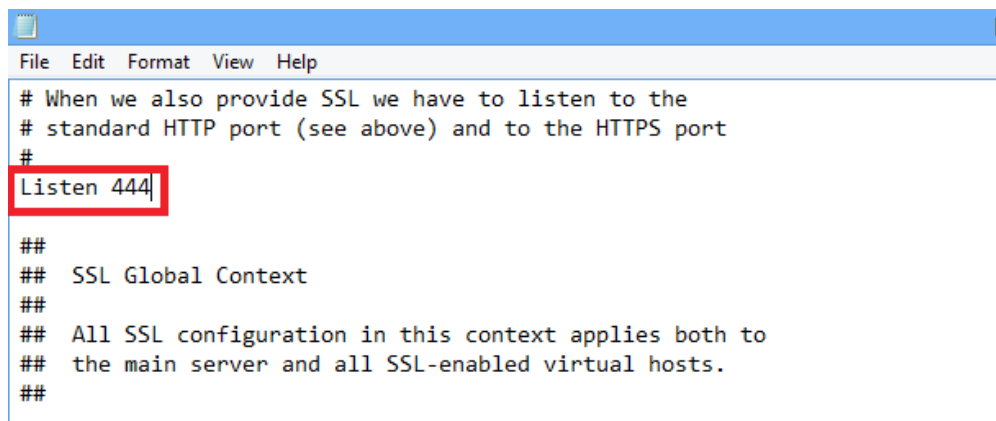
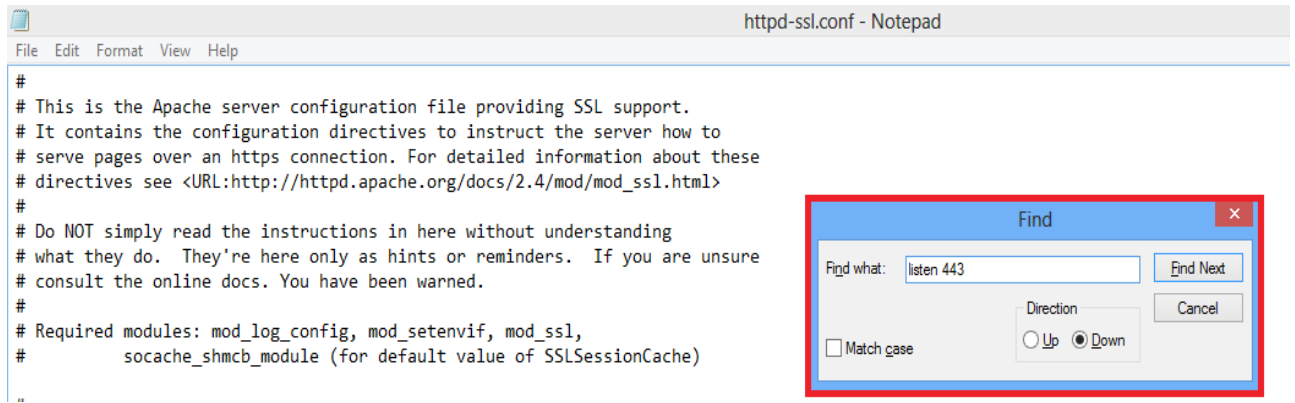


2. Select **Apache (httpd-ssl.conf)**

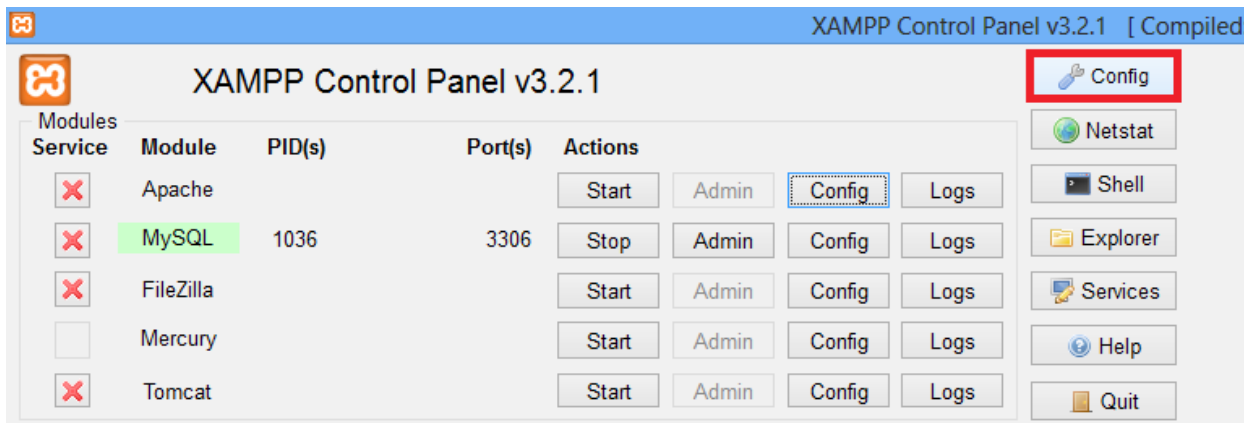


3. **httpd-ssl.conf** file will be opened in the notepad.

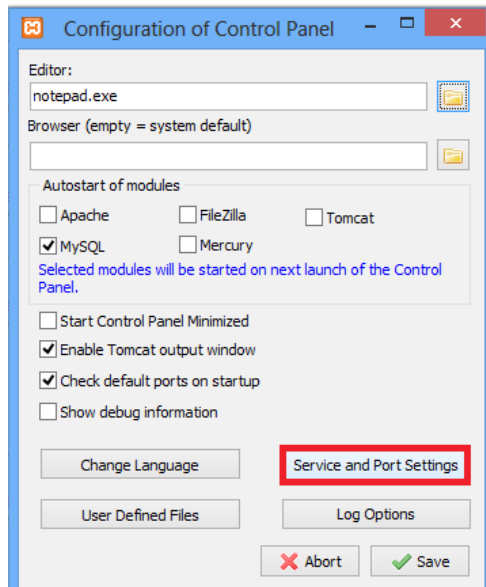
Press **CTRL +F** to search for “**Listen 443**” and change port **443 to 444** and save the document.



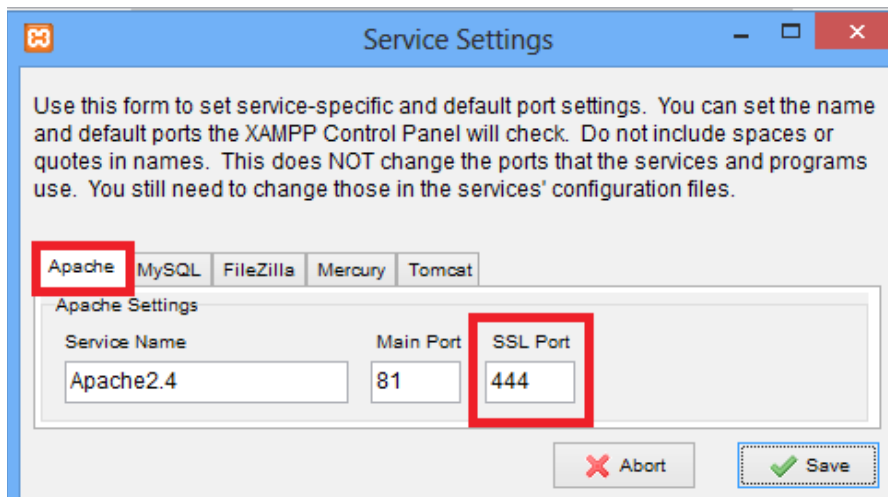
4. Click on **XAMPP config** (On Top Right)



5. In the next window, Click on **Service and Port Settings**



6: Go to **Apache** tab, change **SSL Port** from 443 to 444 and save all settings.



7. Close **Xampp** and **Start Apache and MySQL** services.

The below screen shows that all services are running successfully.

