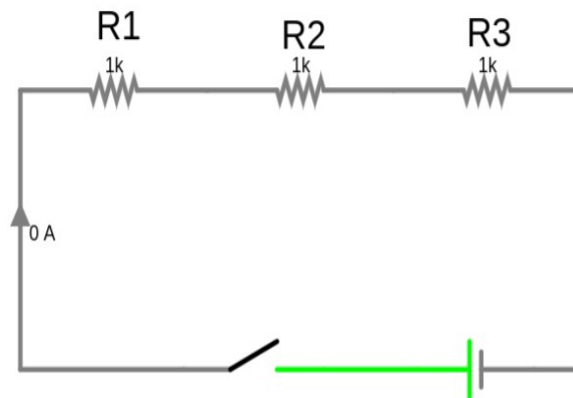


CircuitJS
Series and Parallel Resistance circuits – Assignment

Assignment 1: Series Resistance

1. In the same circuit, change the value of resistors as $R1 = 4\text{KOhms}$, $R2 = 2\text{KOhms}$, $R3 = 100\text{ Ohms}$.
2. Change the DC Power supply voltage to 5 Volts.
3. Notice the current flowing and voltage drop at each resistor.



Assignment 2: Parallel Resistance

1. Change the DC voltage supply value to 5 Volts.
2. Notice the change in voltage and current for each resistor.

